



## 2-Position Single Solenoid Valves

1/4" & 3/8" NAMUR Style



**MME-33WESB-D012**



**MME-32QESB-D220**

Maximatic® 3-way and 4-way single solenoid spring return pool valves are also available in 1/4" NPT actuator mount or 3/8" NAMUR mount.

**Medium:** Air (40 micron filtration) or Inert Gas

**Operating Range:** 20 to 125 psig

**Electrical Connection:** DIN terminal with LED indicator ("-D"), or Grommet with 18" Wire Lead ("-W")

**Voltage:** 12-volt DC ("-012"), 24-volt DC ("-024"), 24-volt AC ("-24A"), 110-volt AC ("-110"), or 220-volt AC ("-220")

**Number of Ports:** 3 or 5

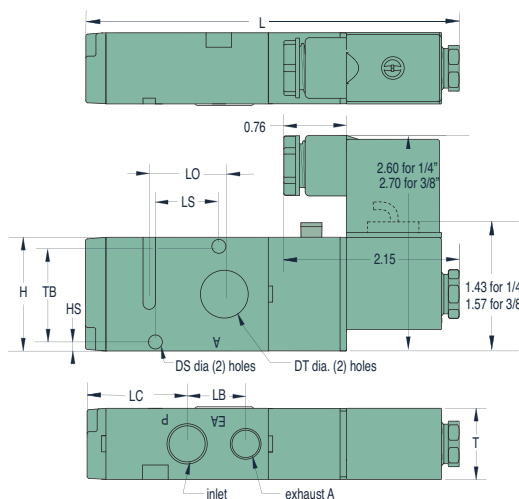
**Mounting:** Actuator (1/4" NPT only) or NAMUR (3/8" NPT only).

**Manual Override:** Locking

**Power Consumption:** 3 Watts

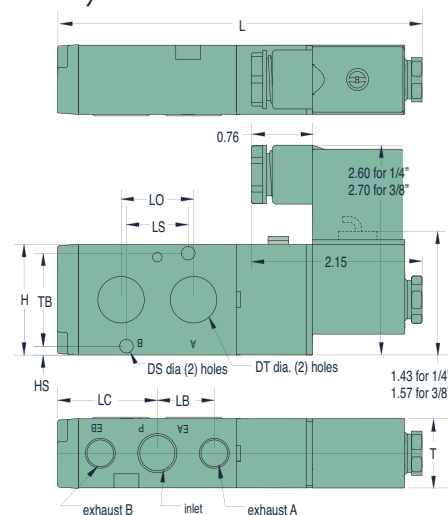
NAMUR/Actuator mount available on other 3- and 4-way Electronic and Air Pilot valves—  
Call for specifications.

### 3-Way Solenoid Valves



Dim.	1/4" NPT	3/8" NPT
DS	0.17	0.22
DT	0.72	0.78
H	1.38	1.58
HS	0.09	0.15
L	4.49	5.19
LC	1.21	1.57
LB	0.71	0.94
LO	0.9	0.94
LS	0.79	0.94
T	0.86	1.06
TB	1.14	1.26

### 4-Way Solenoid Valves



#### 3-Way Single Solenoid Valves

**MME-32QESB-**  
**MME-33WESB-**



#### Supply Port

1/4" NPT  
3/8" NPT

#### Outlet

0.72"  
0.78"

#### Exhaust

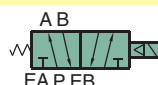
1/4" NPT  
1/4" NPT

#### Cv/scfm\*

0.89/49  
1.68/93

#### 4-Way Single Solenoid Valves

**MME-42QESB-**  
**MME-43WESB-**



#### Supply Port

1/4" NPT  
3/8" NPT

#### Outlet

0.72"  
0.78"

#### Exhaust

1/4" NPT  
1/4" NPT

#### Cv/scfm\*

0.89/49  
1.68/93

\* scfm based on flow @ 100 psig

Add Electrical Connection and Voltage Choices to the end of each Base Part Number - Example: **MME-42QESB-D110**